



*PITTSVILLE HOMES INC*  
5094 Second Ave. – PO Box C – Pittsville, WI 54466  
Toll Free: 877-248-8371  
Fax: (715) 884-2136  
www.pittsvillehomes.com

## **SOLITUDE SERIES STANDARD SPECIFICATIONS:**

- ▶ Built following Wisconsin Energy Star Standard.
- ▶ Built to the Wisconsin “Uniform Dwelling Code”.
- ▶ 2x10 perimeter joist on sides with 2x10 Floor joists, 16” oc.
- ▶ ¾” Tongue and Groove OSB.
- ▶ Vinyl flooring throughout.
- ▶ R-20 Wall system.
- ▶ Walls - ½” Sheetrock.
- ▶ Ceiling - 5/8” sheetrock with vapor barrier paint.
- ▶ R-40 Ceiling insulation.
- ▶ 5/12 Roof pitch.
- ▶ Vinyl Siding with house wrap.
- ▶ White Prefinished aluminum soffit.
- ▶ Lifetime Limited Warranty algae resistant shingles.
- ▶ Primed Steel Insulated exterior door with primed jamb.
- ▶ Energy star single hung vinyl windows.
- ▶ Fiberglass shower.
- ▶ Exterior vented bath fan.
- ▶ Range hood vented to the exterior.
- ▶ Oak Cabinets.
- ▶ Oak trim and masonite doors.
- ▶ #12 Electrical wiring.
- ▶ 100 Amp load center.

Standard Specifications are subject to change without notice

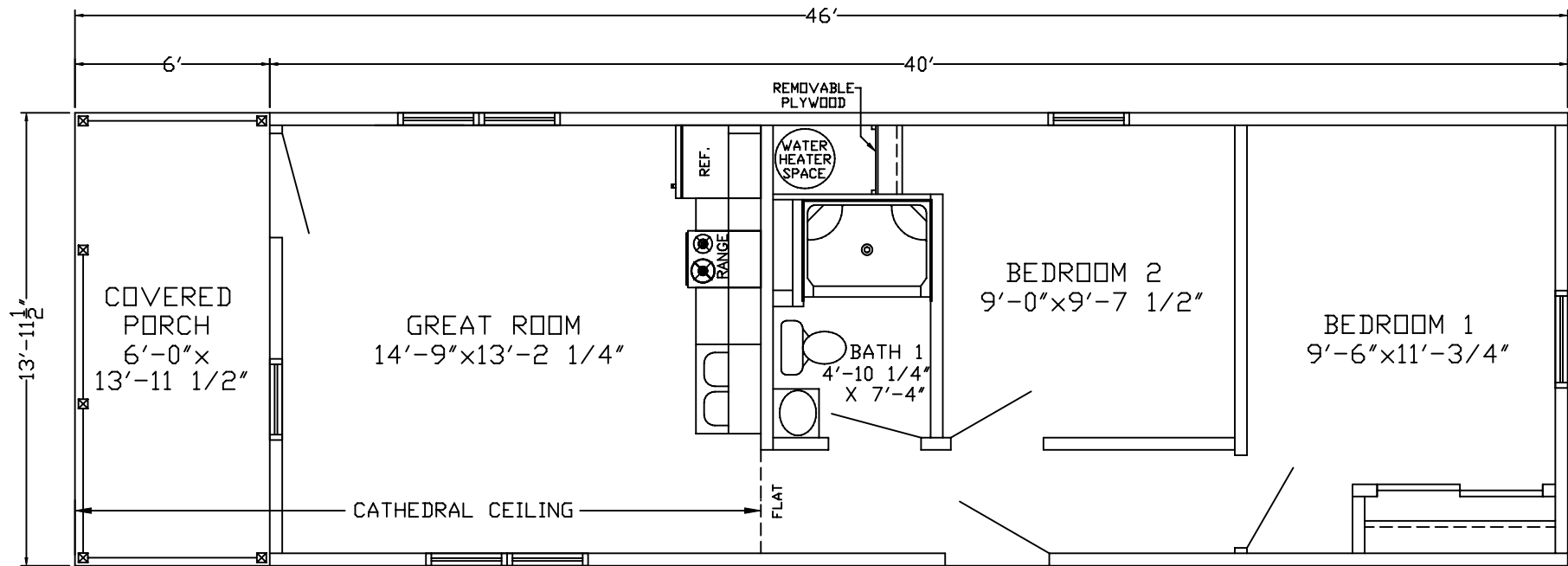
## **CONSIDERATIONS FOR THE SOLITUDE SERIES CABIN:**

- ▶ Check your local zoning requirements.
- ▶ Requires a Department of Commerce Building Permit.
- ▶ Requires a permanent foundation with sill seal such as:
  - Piers at least 48” below grade
  - Masonry frost wall
  - Frost protected slab with minimum 3 course block
  - All weather wood foundation frost wall.
- ▶ A Solitude series cabin will be considered as real estate vs. personal property for tax purposes.

Homeowner’s onsite responsibilities:

- ▶ Foundation
- ▶ House anchored to foundation
- ▶ Install bottom row of siding
- ▶ Well and septic and connections to house.
- ▶ Meter base and electric hookup to house.
- ▶ A minimum of 18’ width access to site is required.

Contact Pittsville Homes or your local Pittsville Homes Builder for more information on the Solitude Series.



# RETREAT 2011

MODEL	SOLITUDE SERIES	
PLAN	40'X14'	558SF

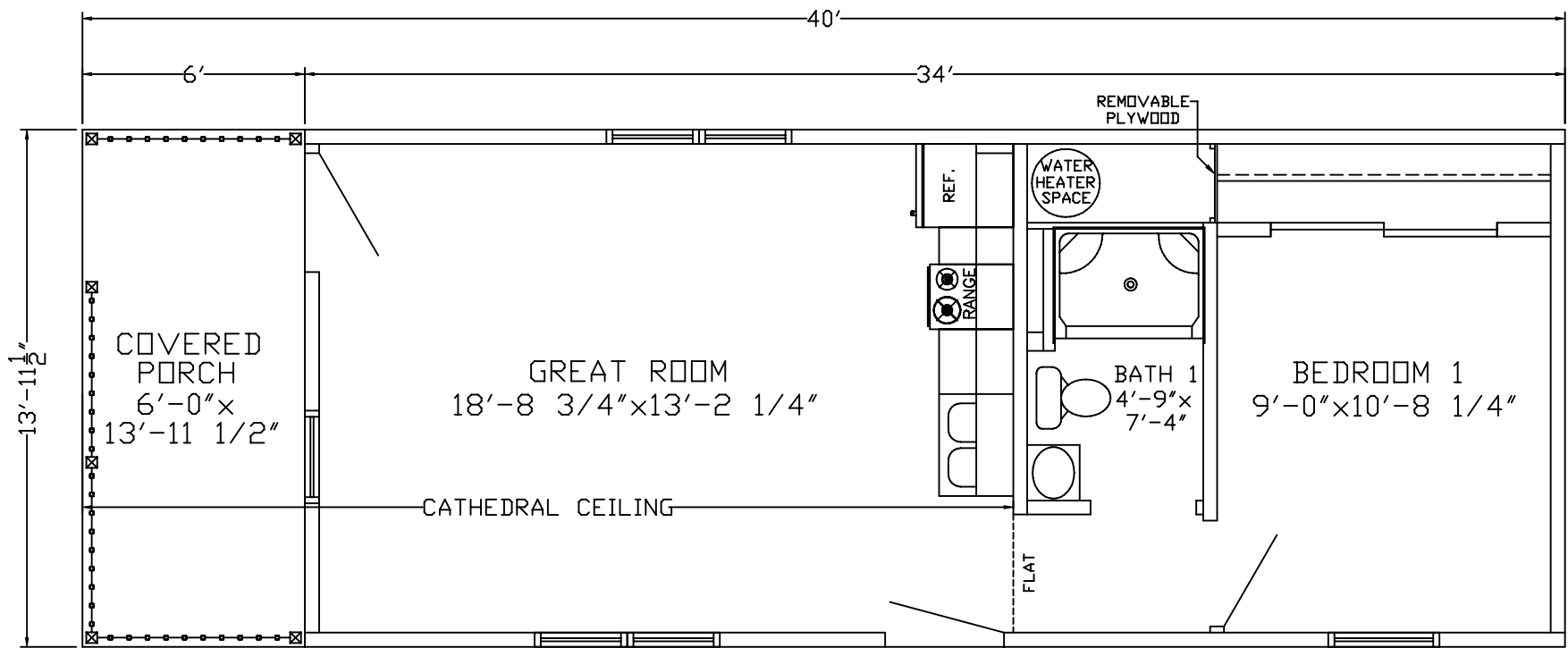
## FLOOR PLAN & ELEVATION

DATE :	2-1-2011
--------	----------

HOUSE NUMBER :	RETREAT
----------------	---------



**PITTSVILLE HOMES INC**  
 BOX C - HWY 80 SOUTH  
 PITTSVILLE, WISCONSIN 54466



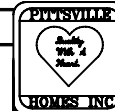
PINE POINT 2011

MODEL	SOLITUDE SERIES	
PLAN	34'X14'	475SF

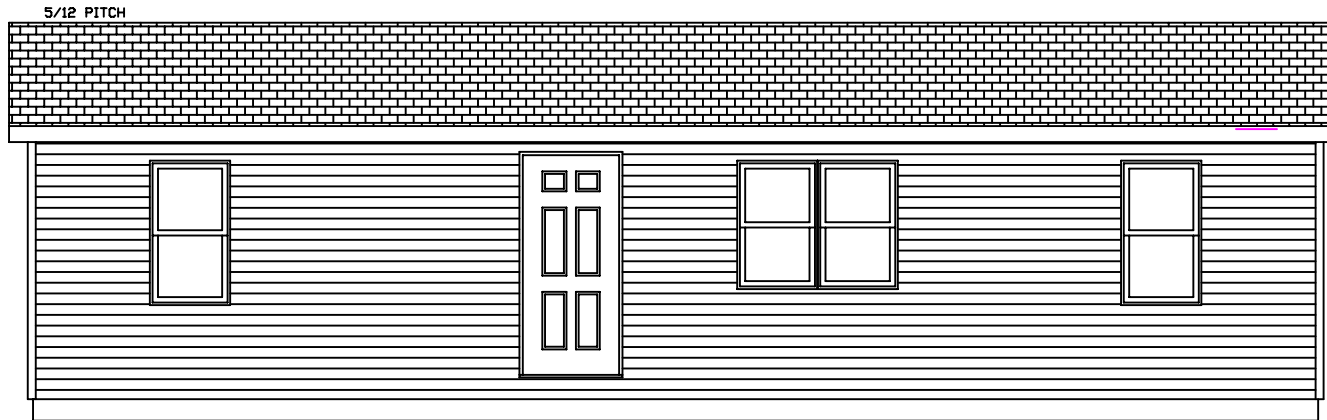
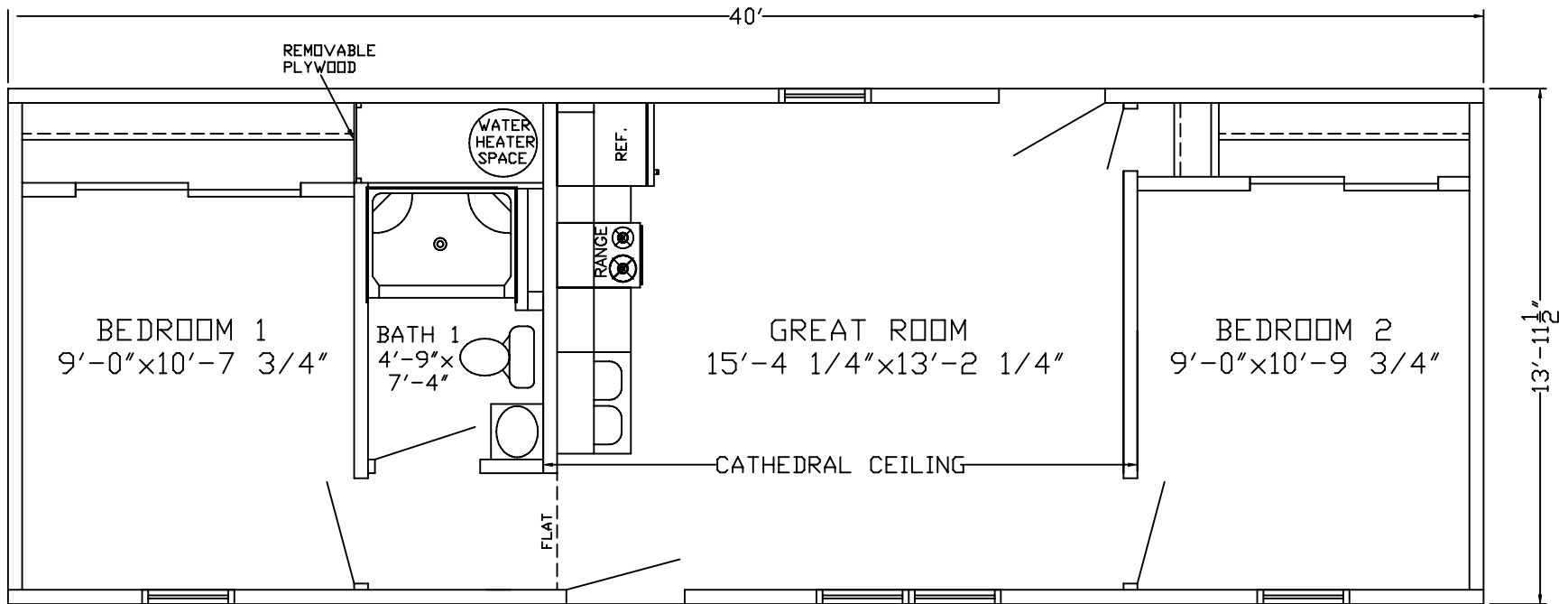
FLOOR PLAN  
& ELEVATION

DATE :  
2-1-2011

HOUSE NUMBER :  
PINE POINT



**PITTSVILLE  
HOMES INC**  
BOX C - HWY 80 SOUTH  
PITTSVILLE, WISCONSIN 54466



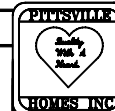
## SANDY BEACH 2011

MODEL	SOLITUDE SERIES	
PLAN	40'X14'	558SF

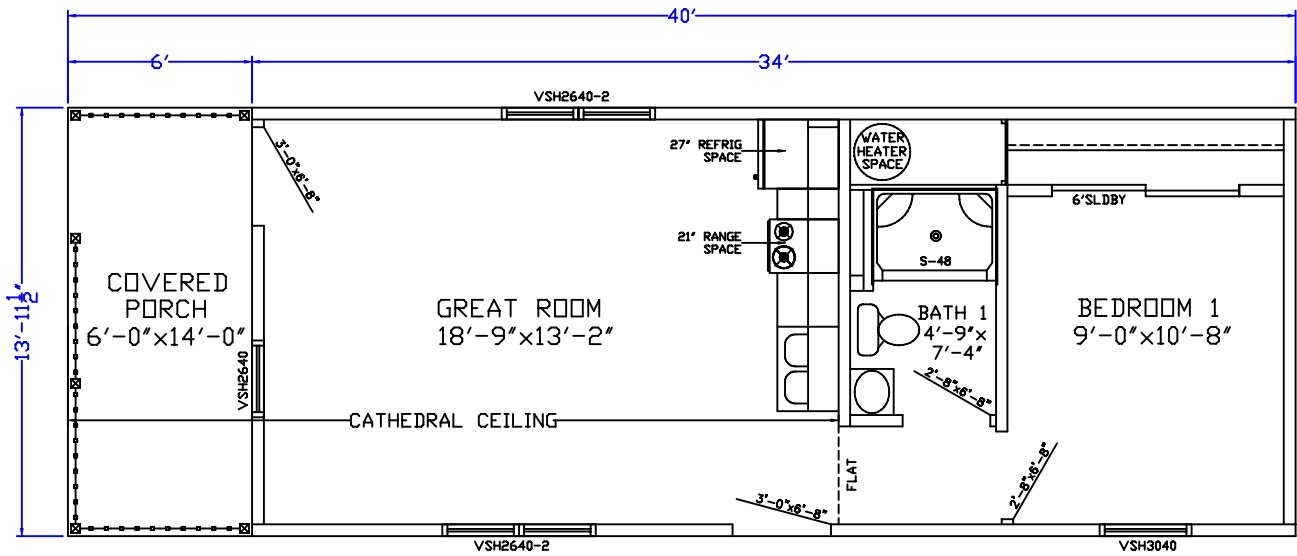
### FLOOR PLAN & ELEVATION

DATE :  
2-1-2011

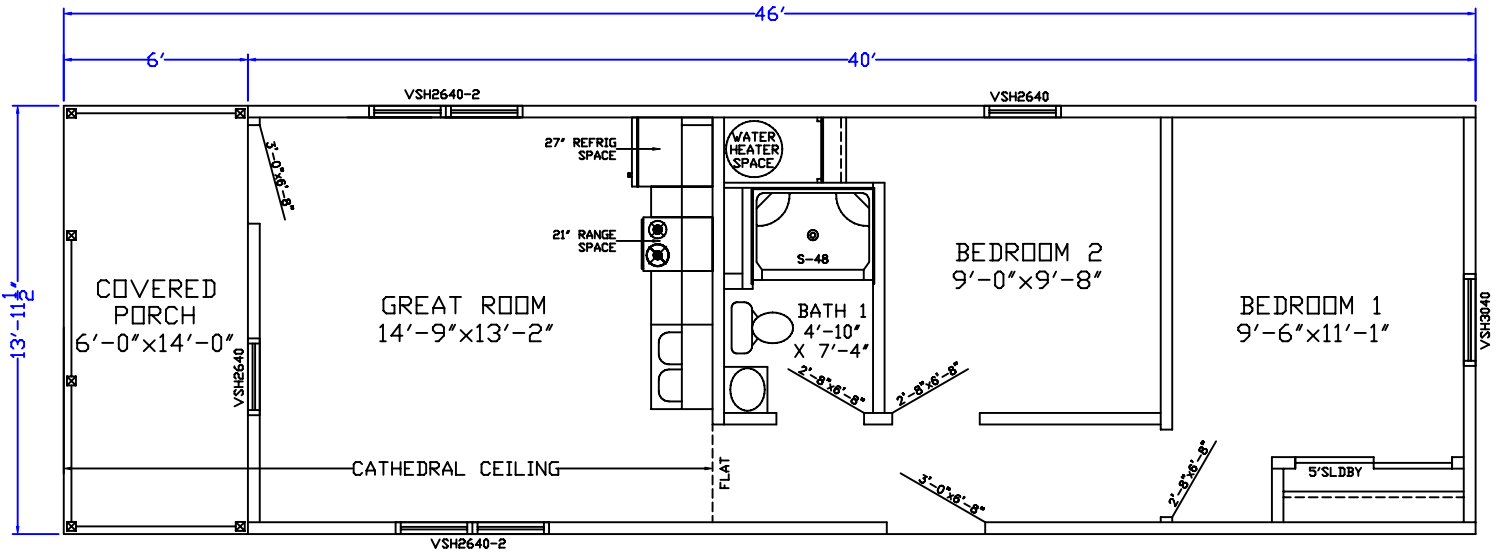
HOUSE NUMBER :  
SANDY BEACH



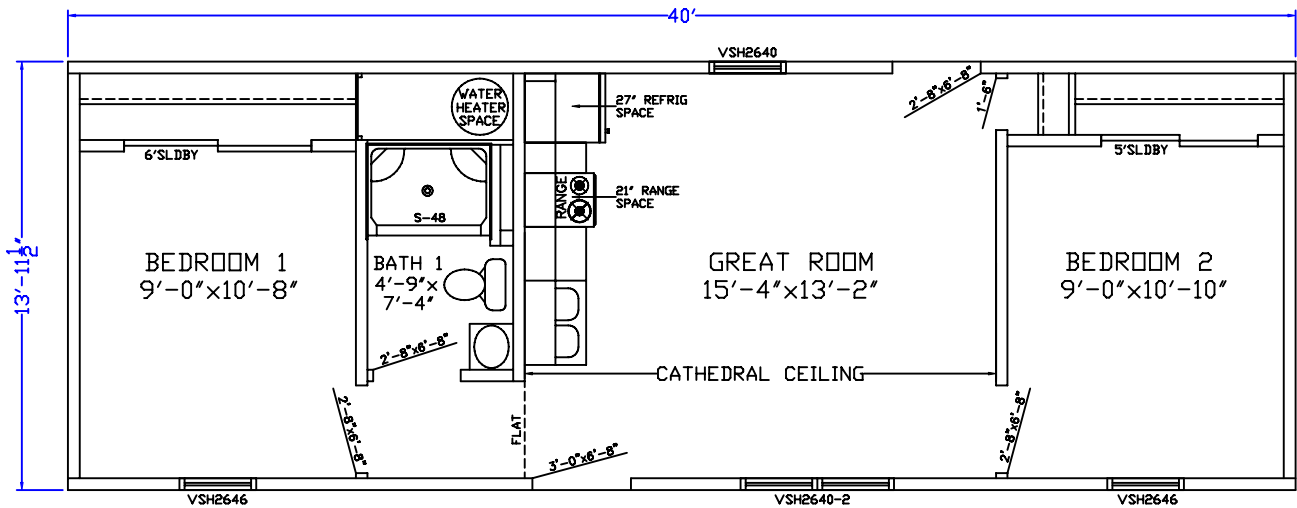
**PITTSVILLE  
HOMES INC**  
BOX C - HWY 90 SOUTH  
PITTSVILLE, WISCONSIN 54466



PINE POINT 2011



RETREAT 2011



SANDY BEACH 2011